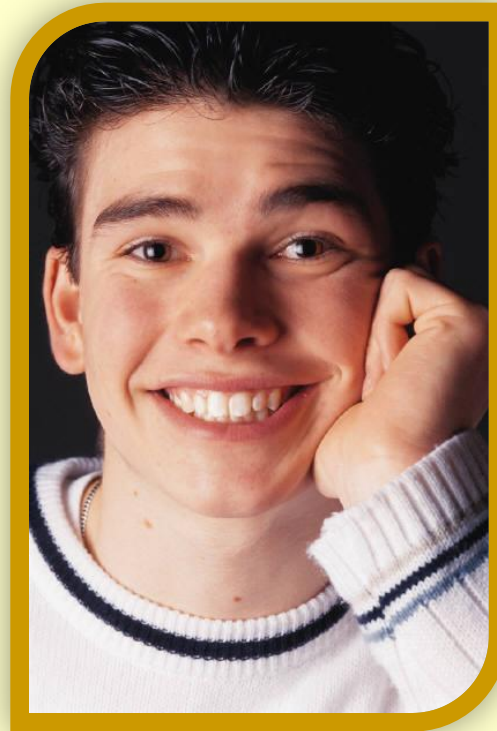


# FCI

**The Fan Club International Inc.**

*“Where The Entertainment Revolution Has Begun!”*

## Teen Associate



# How To Become a Teen Associate

## Requirements

- Must be 14-17 years of age with Parental Approval
- Complete the FCI “Teen Associate Agreement”

## How to Start Purchase

- Option #1: FCI “Teen Associate” Starter Package

## Fast Track Ways to Start

- Option #2: FCI “Teen Associate” Package
- Option #3: FCI “Group Teen Associate” Package
- Option #4: FCI “Area Teen Associate” Package
- Option #5: FCI “Regional Teen Associate Package

## Option #1: FCI “Teen Associate” Starter Package

**Cost \$19.95**

**(Includes)**

- FCI G.E.M. Online Marketing Manual
- Eligible: for Founding Associate Pool\*\*\* (Limited Time Only)
- Includes 1<sup>st</sup> Month “Minimum” Entertainment Empowerment Subscription\*
- Choice of a CD, DVD, or BOOK Product\*
- Limited Choice of FCI’s (Selected) Product Line\*
- FCI Monthly Complementary Showcase Event Pass (Admit-12)\* <sup>fn1</sup>
- Total Legal Connection aka T.L.C. Program
- Fans Artists Connect Together aka F.A.C.T. Program
- FCI Back Office Receptacle Website
- FCI Network Social Site & FAN Online Magazine
- Purchase Products & Venue Tickets at Wholesale Pricing
- Minimum Advertising Material Included.

<sup>fn1</sup> \*Received only when you’ve purchased your “Mandatory” 19.95 Entertainment Empowerment Subscription.

## Fast Track Ways to Start

### Option #2: FCI “Teen Associate” Package

**Cost \$69.95**

**(Includes)**

- FCI G.E.M. Online Marketing Manual
  - Eligible: for Founding Associate Pool\*\*\* (Limited Time Only)
  - Eligible to promote and share in “All” Bonuses and Bonus Pool
  - Includes 1<sup>st</sup> Month Entertainment Empowerment Subscription\*
  - FCI Advertising Brochures, Recruitment & Training Material\*
  - FCI Complementary Monthly Showcase Event Pass (Admit-12)\* fn1
  - Choice of 1-CD, 1-DVD, and 1-BOOK Product\*
  - Limited Choice of FCI (Selected) Product Line\*
  - Total Legal Connection aka T.L.C. Program
  - Fans Artists Connect Together aka F.A.C.T. Program
  - FCI Back Office Receptacle Website
  - FCI Network Social Site
  - FAN Online Magazine
  - Purchase Products & Venue Tickets at Wholesale Pricing
- fn1 \*Received only when you’ve purchased your “Mandatory” 19.95 Entertainment Empowerment Subscription.

## **Option #3: FCI “Group Teen Associate” Package**

**Cost \$225.95**

**(Includes)**

- You (Investor) start at the Group Fan Associate Level
- FCI G.E.M. Online Marketing Manual
- Includes 1<sup>st</sup> Month “Minimum” Entertainment Empowerment Subscription\*
- You receive 2- CD’s, 2- DVD’s and 2- BOOK’s Product\*
- FCI Monthly Complementary Showcase Event Pass (Admit-18)\* fn1
- Choice of FCI (Special) Product Line\*
- Immediately Eligible for “All” Bonuses and Bonus Pools\*
- Eligible: for Free Concert Tickets\*
- FCI Advertising Brochures, Recruitment & Training Material\*
- Total Legal Connection aka T.L.C. Program\*
- Fans Artists Connect Together aka F.A.C.T. Program\*
- 1 Free FCI Training Seminar\*
- FCI Back Office Receptacle Website\*
- FCI Network Social Site & FAN Online Magazine
- Purchase Products & Venue Tickets at Wholesale Pricing
- Allows Investor to add 5 “Fast Track Associates” (See: Fast Track Associate)

fn1 \*Received only when you’ve purchased your “Mandatory” 19.95 Entertainment Empowerment Subscription. \* The above benefits are for the Investor only. (See: Group Fan Associate)

## **Option #4: FCI “Area Teen Associate” Package**

**Cost \$529.95**

**(Includes)**

- You (Investor) start at the Area Fan Associate Level
  - FCI G.E.M. Online Marketing Manual
  - 1<sup>st</sup> Month’s “Gold” Entertainment Empowerment Package (EEP)\*
  - You receive 3- CD’s, 3- DVD’s and 3- BOOK Products\*
  - FCI Monthly Complementary Showcase Event Pass (Admit-24)\* F<sub>n1</sub>
  - Limited Choice of FCI (Special) Product Line\*
  - Immediately Eligible for “All” Bonuses and Bonus Pools\*
  - Eligible: for Free Concert Tickets\*
  - FCI Advertising Brochures, Recruitment & Training Material\*
  - Total Legal Connection aka T.L.C. Program
  - Fans Artists Connect Together aka F.A.C.T. Program
  - 1 Free FCI Training Seminar
  - FCI Back Office Receptacle Website
  - FCI Network Social Site & FAN Online Magazine
  - Purchase Products & Venue Tickets at Wholesale Pricing
- Allows Investor to add 20 “Fast Track Associates” (See: Fast Track Fan Associate)
- <sup>f<sub>n1</sub></sup> \*Received only when you’ve purchased your “Mandatory” 19.95 Entertainment Empowerment Subscription. \*The above benefits are for the Investor only. (See: Area Fan Associate)

## **Option #5: FCI “Regional Fan Teen Associate” Package**

**Cost \$949.95**

### **(Includes)**

- You (Investor) start at the Regional Fan Associate Level
- FCI G.E.M. Online Marketing Manual
- 1<sup>st</sup> Month’s “Basic” Entertainment Empowerment Package (EEP)\*
- You receive 4- CD’s, 4- DVD’s and 4- BOOK Products\*
- FCI Monthly Complementary Showcase Event Pass (Admit-30)\* (See below. fn1)
- Choice of FCI (Special) Product Line\*
- Eligible: for Founding Associate Pool\* Eligible: for Quarterly Bonus Pool\*
- Eligible: for “All” Bonuses and Bonus Pools\*
- Eligible: for Free Concert Tickets\*
- FCI Advertising Brochures, Recruitment & Training Material\*
- Total Legal Connection aka T.L.C. Program
- Fans Artists Connect Together aka F.A.C.T. Program
- 1 Free FCI Training Seminar\*
- FCI Back Office Receptacle Website,
- FCI Network Social Site, FAN Online Magazine
- Purchase Products & Venue Tickets at Wholesale Pricing
- Allows Investor to add 40 “Fast Track Associates” (See: Fast Track Fan Associate)

\*Received only when you’ve purchased a “Minimum Monthly” 19.95 Entertainment Empowerment Subscription. \* The above benefits are for the Investor only. (See: Regional Fan Associate)

# Overview for “Business Development”

## Qualifying Exceptions

\*\*\*All promotion (PV) & (GV) must be produced within an FCI 30 day calendar month.

### Fan Associate (FA)

1. Pay start-up cost, recruit Associates, and build your 5X5 Matrix
2. You are eligible for “Override Commission” on the First Three Levels (1-3) of your 5X5 Matrix
3. You are not eligible for Bonuses or Bonus Pools.

### Group Fan Associate (GFA)

1. You personally sponsor 3 Associates - 1 in 3 Legs of your 5 Down-Line Legs.
2. Produce a Personal Volume - (PV) of \$200.00.
3. You and your group produce a Group Volume - (GV) of \$1,200.
4. You are eligible for “Override Commission” on all Five Levels (1-5) in your 5X5 Matrix
5. You are not eligible for Bonus Pools.

### Area Fan Associate (AFA)

1. Your group develops 3 Group Fan Associates - 1 in 3 Legs of your 5 Down-Line Legs.
2. Produce a Personal Volume - (PV) of \$400.00.
3. You and your group produce a Group Volume - (GV) of \$5,300.
4. You are eligible for “Override Commission” on all Five Levels (1-5) in your 5X5 Matrix.
5. You are eligible for Level 6 Generation Bonus @ 3%



# Overview for “Business Development”

Continued...

## Qualifying Exceptions

\*\*\*All promotional (PV) & (GV) must be produced within an FCI 30 day calendar month.

### Regional Fan Associate (RFA)

1. Your group develops 3 Area Fan Associates - 1 in 3 Legs of your 5 Down-Line Legs.
2. Produce a Personal Volume - (PV) of \$1,000.00.
3. You and your group produce a Group Volume - (GV) of \$10,600.
4. You are eligible for “Override Commission” on all Five Levels (1-5) in your 5X5 Matrix
5. You are eligible for Level 6 Generation Bonus @ 3%
6. You are eligible for Level 7 Generation Bonus @ 2%
7. You are eligible for “FCI Quarterly Bonus Pool”
8. You are eligible for “Food & Gas Bonus” \*\*\*

### Regional Vice President (RVP)

1. Your group develops 3 Regional Fan Associates - 1 in 3 Legs of your 5 Down-Line Legs
2. Produce a Personal Volume - (PV) of \$2,000.00.
3. You and your group produce a Group Volume - (GV) of \$50,600.
4. You are eligible for “Override Commission” on all Five Levels (1-5) in your 5X5 Matrix.
5. You are eligible for Level 6 Generation Bonus @ 3%
6. You are eligible for Level 7 Generation Bonus @ 2%
7. You are eligible for Level 8 Generation Bonus @ 2%
8. You are eligible for “ FCI Quarterly Bonus Pool
9. You are eligible for “Food & Gas Bonus” \*\*\*

# “Promotion Requirements & Bonuses”

Continued...

## Qualifying Exceptions

\*\*\*All promotional (PV) & (GV) must be produced within an FCI 30 day calendar month.

### National Vice President (NVP)

1. Your group develops 3 Regional Vice Presidents - 1 in 3 Legs of your 5 Down-Line Legs.
2. Produce a Personal Volume - (PV) of \$3,000.00
3. You and your group produce a Group Volume - (GV) of \$250,000.
4. You are eligible for “Override Commission” on all Five Levels (1-5) in your 5X5 Matrix.
5. You are eligible for Level 6 Generation Bonus @ 3%
6. You are eligible for Level 7 Generation Bonus @ 2%
7. You are eligible for Level 8 Generation Bonus @ 2%
8. You are eligible for Level 9 Generation Bonus @ 1% (NVP Manager Pool)
9. You are eligible for “FCI Quarterly Bonus Pool”
10. You are eligible for “Food & Gas Bonus” \*\*\*
11. You are eligible for “FCI Car Bonus” \*\*\*

### International President (IP)

1. Your group develops 3 National Vice Presidents - 1 in 3 Legs of your 5 Down-Line Legs.
2. Produce a Personal Volume - (PV) of \$4,000.00.
3. You and your group produce a Group Volume - (GV) of \$1,200,000.
4. You are eligible for “Override Commission” on all Five Levels (1-5) in your 5X5 Matrix
5. You are eligible for Level 6 Generation Bonus @ 3%
6. You are eligible for Level 7 Generation Bonus @ 2%
7. You are eligible for Level 8 Generation Bonus @ 2%
8. You are eligible for Level 9 Generation Bonus @ 1% (NVP Manager Pool)
9. You are eligible for Level 10 Generation Bonus @ 1% (IP Manager Pool)
10. You are eligible for “FCI Quarterly Bonus Pool”
11. You are eligible for “Food & Gas Bonus” \*\*\*
12. You are eligible for “FCI Car Bonus” \*\*\*

## “Teen Associate”

### Promotional Ranks, Requirements & Sales Volume Chart

<b>Promotional Ranks</b>	<b>Group Fan Associate (GFA)</b>	<b>Area Fan Associate (AFA)</b>	<b>Regional Fan Associate (RFA)</b>	<b>Regional Vice President (RVP)</b>	<b>National Vice President (NVP)</b>	<b>International President (IP)</b>
<b>Promotion Requirements</b>	Personally Sponsor 3 Associates 1 in 3 of your 5 Down-Line Legs	Develop 3 GFA 1 in 3 of your 5 Down-Line Legs	Develop 3 AFA 1 in 3 of your 5 Down-Line Legs	Develop 3 RFA 1 in 3 of your 5 Down-Line Legs	Develop 3 RVP 1 in 3 of your 5 Down-Line Legs	Develop 3 NVP 1 in 3 of your 5 Down-Line Legs
	<b>**Promotional Required Sales Volume**</b>					
<b>**Personal Volume (PV)</b>	<b>PV \$200</b>	<b>PV \$400</b>	<b>PV \$1,000</b>	<b>PV \$2,000</b>	<b>PV \$3,000</b>	<b>PV \$4,000</b>
<b>**Group Volume (GV)</b>	<b>GV \$1,200</b>	<b>GV \$5,300</b>	<b>GV \$10,600</b>	<b>GV \$50,600</b>	<b>GV \$250,000</b>	<b>GV\$1,200,000</b>
<b>**Promotional Time</b>	<b>**Promotions are acquired when PV and GV is made in an FCI Calendar Month.</b>					
<b>**Exceptions</b>	<b>** Must be 14-17 years of age with parent approval. **</b>					
<b>**FCI 5% Quarterly Bonus Pool</b>	N/A	N/A	Share	Share	Share	Share

# “Teen Associate” 5X5 Forced Matrix Commissions and Potential Income Chart

Cost of Entertainment Empowerment Pkg. \$19.95	Matrix Width & Depth	FCI Entry Positions				Promotion Rank	Promotion Rank	Promotion Rank	Promotion Rank	Promotion Rank	Promotion Rank
		Override Comm. Percent %	Fan & Teen Associate (FA) (TA)	Artist Associate (AA)	Charitable Associate (CA)	Group Fan Associate (GFA)	Area Fan Associate (AFA)	Regional Fan Associate (RFA)	Regional Vice President (RVP)	National Vice President (NVP)	International President (IP)
<b>Matrix Levels</b>	Customers or Associates in Matrix										
Level 1 @ \$19.95	5	3.00%	\$2.99	\$2.99	\$2.99	\$2.99	\$2.99	\$2.99	\$2.99	\$2.99	\$2.99
Level 2 @ \$19.95	25	10.00%	\$52.87	\$52.87	\$52.87	\$52.87	\$52.87	\$52.87	\$52.87	\$52.87	\$52.87
Level 3 @ \$19.95	125	5.00%	\$177.56	\$177.56	\$177.56	\$177.56	\$177.56	\$177.56	\$177.56	\$177.56	\$177.56
Level 4 @ \$19.95	625	5.00%	***	***	***	\$800.99	\$800.99	\$800.99	\$800.99	\$800.99	\$800.99
Level 5 @ \$19.95	3,125	7.00%	***	***	***	\$5,165.06	\$5,165.06	\$5,165.06	\$5,165.06	\$5,165.06	\$5,165.06
<b>Generation Bonus Levels</b>			<b>Potential Generation Bonus Income</b>								
Level 6 @ \$19.95	15,625	3.00%	***	***	***	***	\$14,516.62	\$14,516.62	\$14,516.62	\$14,516.62	\$14,516.62
Level 7 @ \$19.95	78,125	2.00%	***	***	***	***		\$45,688.49	\$45,688.49	\$45,688.49	\$45,688.49
Level 8 @ \$19.95	390,625	2.00%	***	***	***	***	***	***	\$201,547.87	\$201,547.87	\$201,547.87
<b>Manager Bonus Levels</b>					***	***		<b>Potential NVP &amp; IP Bonus Income</b>			
Level 9 @ \$19.95	1,953,125	1.00%	***	***	***	***	***	***	***	\$591,196.31	\$591,196.31
Level 10 @ \$19.95	9,765,625	1.00%	***	***	***	***	***	***	***	***	\$2,539,438.49

### \*Commission Sales Requirements

All Associates must purchase a minimum Basic \$19.95 Entertainment Empowerment Package to be eligible for override commissions.

### \*Disclaimer

These examples are based on 19.95 Entertainment Empowerment Package and are potential earnings one could receive from building a G.E.M. 5X5 Forced Matrix and depends on individual and group effort.

# FCI Business Terms

## Sales Volume

\*The following terms identify Sales Volumes, Commissions and Bonuses.

1. (PV) Personal Volume: This is the Personal (sales) Volume you produce from your customers/associates.
2. (GV) Group Volume: This is the volume you and your (Matrix) team jointly produce in group sales.
3. (OC) Override Commission: The income you earn from sales produce in your down-line Matrix.
4. (RC) Retail Commission: The income you earned from the direct purchase of a Retail Customer.
5. (FSB) Fast Start Bonus: The personal commission you earn for selling a “Fast Start” Product.
6. (QBP) Quarterly Bonus Pool: Is shared by Associates promoted to “Regional Fan Associate” and above.
7. (CB) Car Bonus: A pool created for vehicle lease for National Vice Presidents and International Presidents.
8. (FAP) Founding Associate Pool: A pool created for a “Limited Time” for new associates and NO Time Limit for “Investing Associates”.

## Entry Level Associates

\*The following terms identify the four entry level Associate positions.

1. (FA) Fan Associate: Entry Level Associate (18 years).
2. (TA) Teen Associate: Teen Entry Level Associate (14-17 years) with Parent Approval.
3. (AP) Artist Associate: Entertainer(s), (All) Entertainment Producers, Promoter, Writers etc...
4. (CA) Charitable Associate: A Certified Non-Profit Organization sponsored by five FCI Associates.

## Promotion Ranks

\*All Associates are eligible for the below listed Promotional Ranks.

1. (GFA) Group Fan Associate: 1<sup>st</sup> level promotion rank.
2. (AFA) Area Fan Associate: 2<sup>nd</sup> level promotion rank.
3. (RFA) Regional Fan Associate 3<sup>rd</sup> level promotion rank.
4. (RVP) Regional Vice President 4<sup>th</sup> level promotion rank.
5. (NVP) National Vice President 5<sup>th</sup> level promotion rank.
6. (IP) International President 6<sup>th</sup> level promotion rank.
7. (FCICM) FCI Calendar Month from the 12<sup>th</sup> to the 12th.

# **FCI Entry Positions**

**Learn more of other entry level positions...**

- 1. FCI Fan Associate: [Click Here!](#)**
- 2. FCI Artist Associate: [Click Here!](#)**
- 3. FCI Charitable Associate: [Click Here!](#)**